

# JAMES VERBICKY

REPRESENTED BY THE

JoANNE ARTMAN GALLERY

326 N. COAST HIGHWAY, LAGUNA BEACH, CA . 92651

949.510.5481

[WWW.JOANNEARTMANGALLERY.COM](http://WWW.JOANNEARTMANGALLERY.COM)

[JOANNEARTMAN@AOL.COM](mailto:JOANNEARTMAN@AOL.COM)



"AWAKE CONCRETE" 48 X 70 ACRYLIC/CANVAS

*Selected by the Louvre:*

*Shown in Paris December 2008*

James Verbicky was born in Canada in 1973 and began painting with oils and acrylics at the age of four. His works has evolved along a continuum that marks the transient moments of contemporary life with embedded objects, symbols and movement in layers of color. After struggling with legitimacy for many years, Verbicky finally attained the rarely bestowed "Extraordinary Ability Greencard" from the United States government due to his involvement with a myriad of galleries, prominent art collectors, publications, museums, and charity organizations across America.

In 2008, Verbicky was invited to join the juried exhibition of the Societe Nationale des Beaux-Arts (SNBA) at the Carrousel du Louvre in the Louvre Museum in Paris, France. Verbicky was among only twelve American-based artists invited to join the SNBA show, which had been in existence for over a hundred years but had only the year before begin accepting any American delegates.

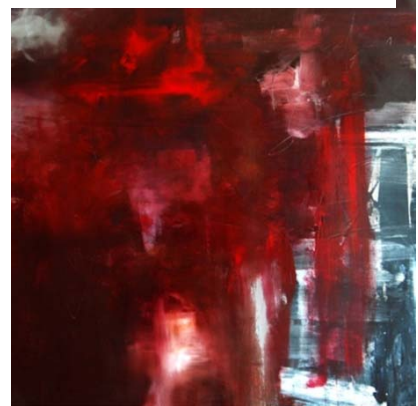
Verbicky was first recognized in California for a commissioned piece done on one of the Frank Gehry Spheres displayed at the Hollywood Bowl. Today he shows widely in galleries as well as fine and famous homes across North America, including the Frank Sinatra Estate in Northridge. Current collectors include the new face of Calvin Klein, Lara Stone, actor Cameron Mathison, and the Chicago Art Museum. His work has most recently been featured in Riviera Magazine Orange County, Luxe Magazine, Kontakt Magazine, Bespoke Magazine, and as part of the 2008 Emmy Awards Celebration.



In the Moment IV. Mixed. 48" x 48"



Intimate Continuum VI. Mixed. 64" x 64"



Drop Shadow. Mixed. 70" x 70"